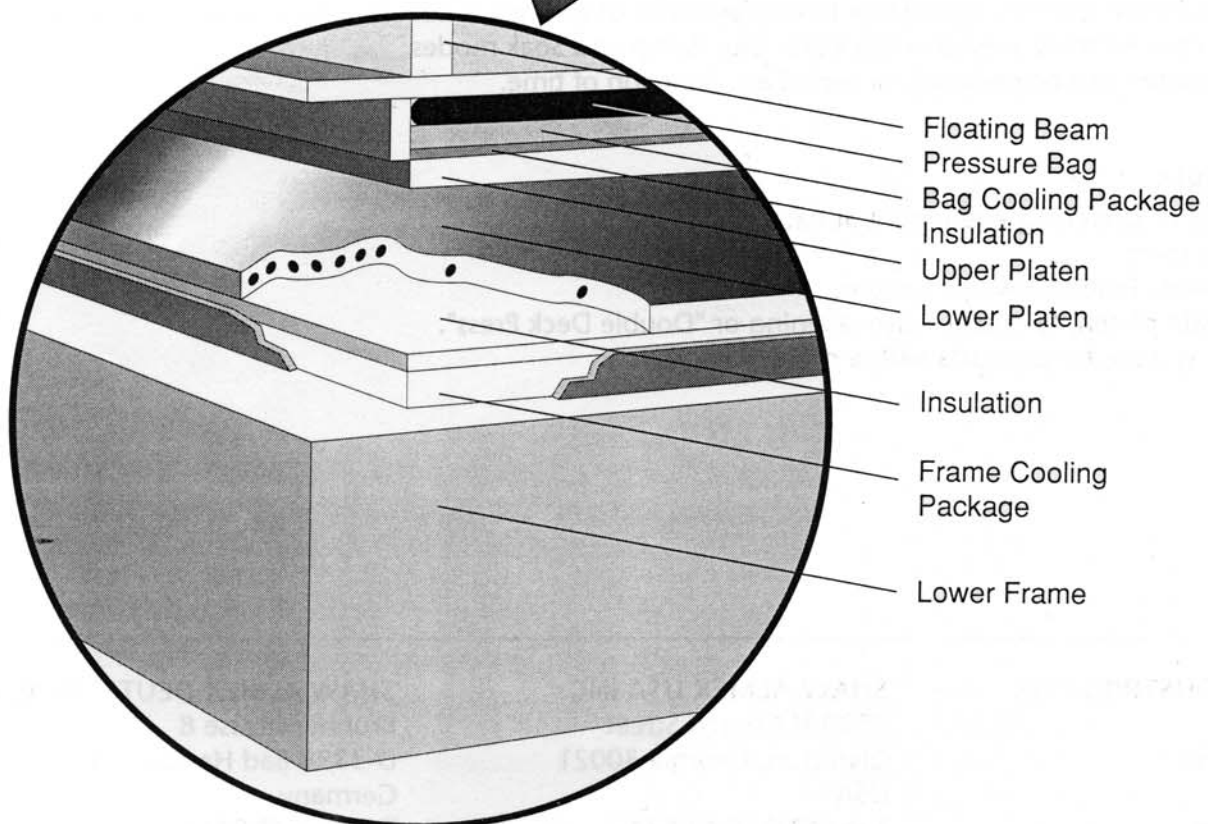
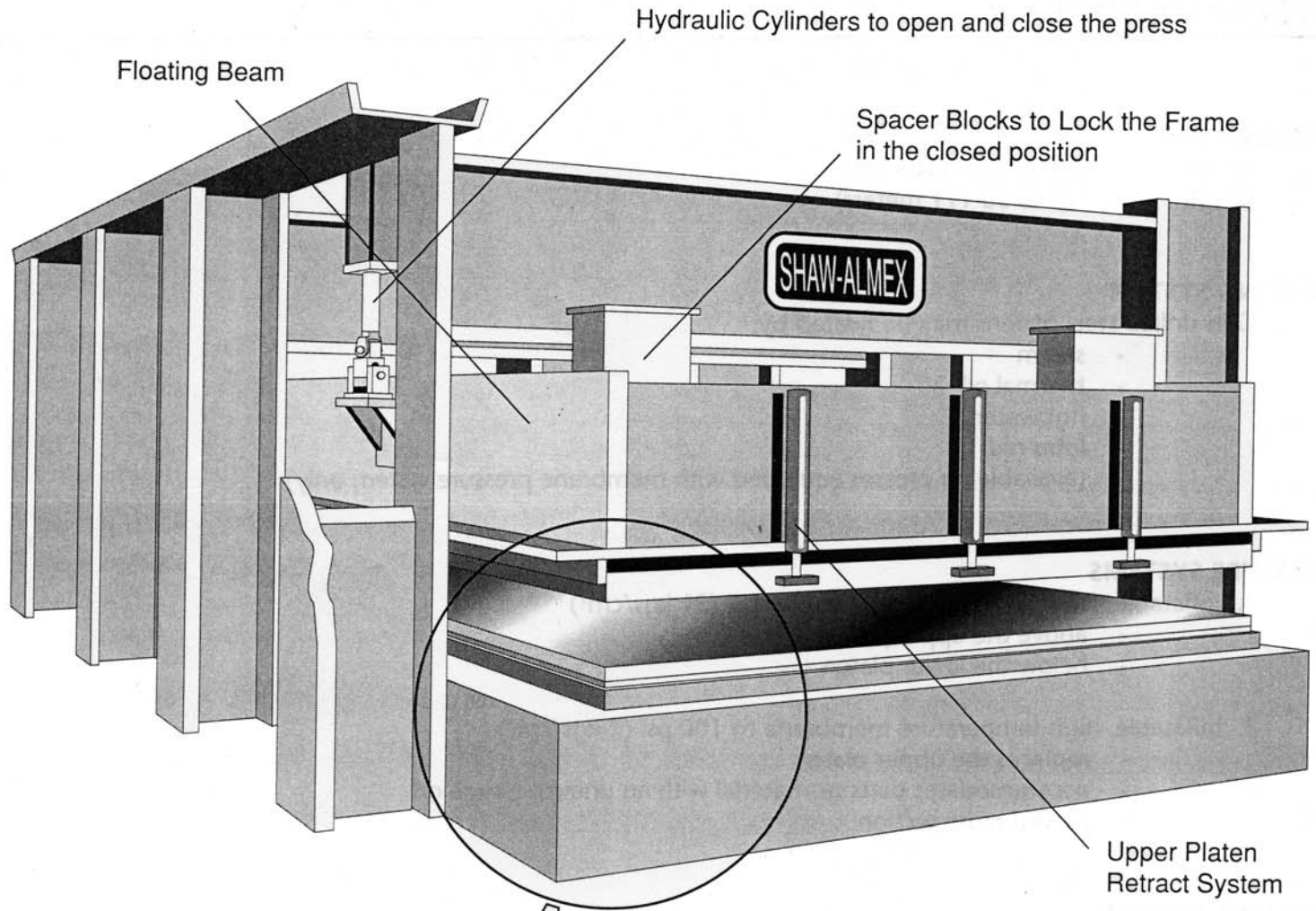


# HORIZONTAL PRESS - RCTD SERIES





## SPECIFICATIONS

# HORIZONTAL PRESS - RCTD SERIES

---

### DIMENSIONS

- Width - Up to 120" (305 cm)
- Length - Up to 36' (11 meters)

### HEATING SYSTEM

Gun-drilled steel platens may be heated by:

- steam
- thermal oil
- hot water
- infra-red

(available on presses equipped with membrane pressure system only)

### PRESSURE SYSTEMS

1. Inflatable, full size pressure bags to 300 psi (21 kgs/cm<sup>2</sup>)
  - above the upper platen
  - below the lower platen
2. Inflatable, high temperature membrane to 100 psi (7 kgs/cm<sup>2</sup>)
  - replaces the upper platen
  - accommodates parts or material with an uneven gauge or curved cross-section.

### CONTROL SYSTEM

- Computer control of the press functions is standard. Press may still be operated in a manual or automatic mode.
- An optional color monitor is available to display status of all press functions, plus pressure and temperature.
- Temperature control is offered in standard, plus Ramp and Soak modes.
- Pressure control can be constant, or varied as a function of time.

### OPTIONAL FEATURES

- Tensioning or stretching equipment at each end of the press.
- Vacuum system.
- Motor driven, Teflon conveyor system.
- Intermediate platen, to create a two-opening or "Double Deck Press".
- Edge-iron system, for products with a molded edge.



SHAW ALMEX INDUSTRIES LTD.

P.O. Box 430, Parry Sound, ON, Canada P2A 2X4

Tel: 705-746-5884 or 1-800-461-4351 • Fax: 705-746-9484

E-mail: [sail@almex.com](mailto:sail@almex.com)

[www.almex.com](http://www.almex.com)

Offices in: Australia  
Brasil  
China  
Germany  
India  
USA