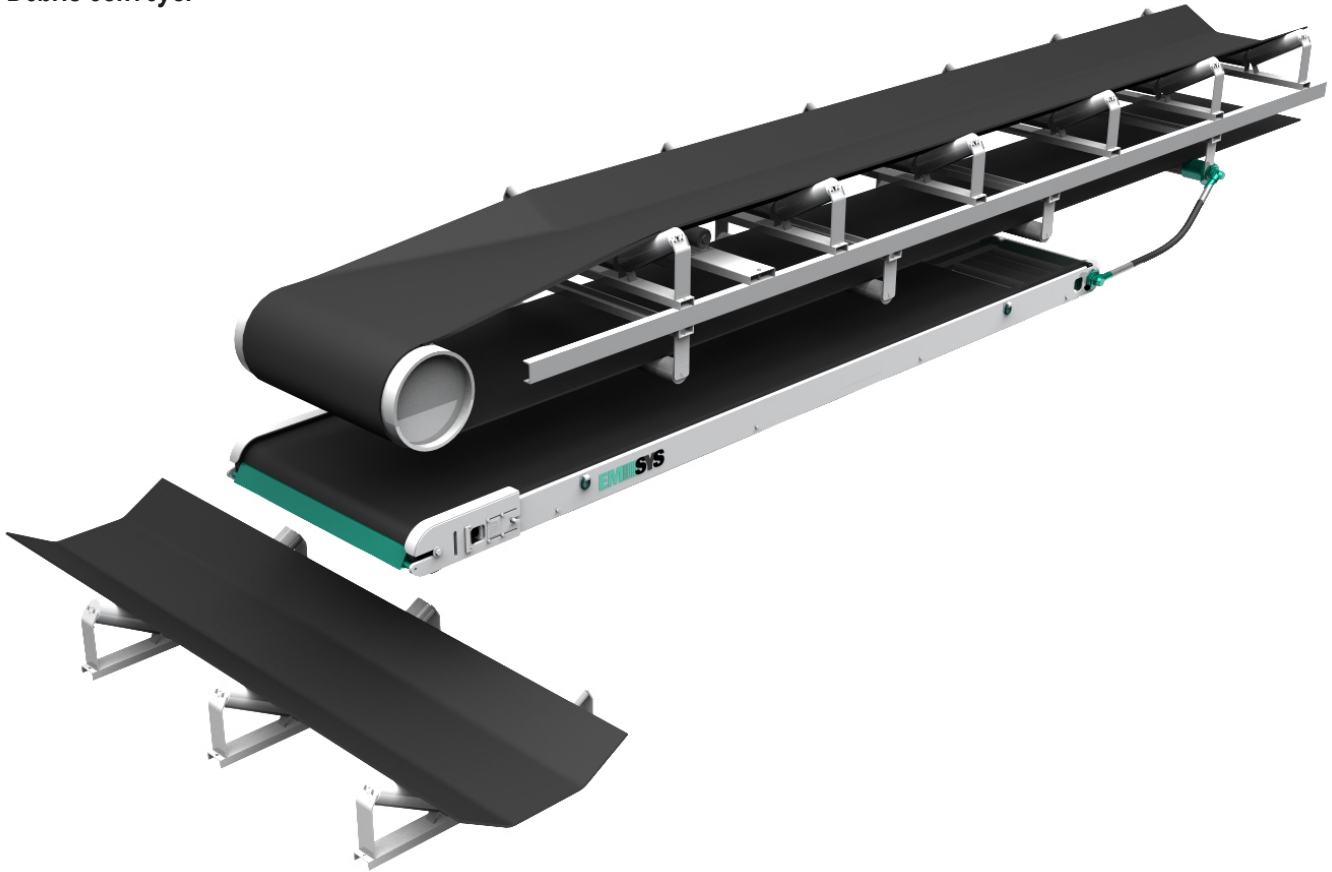


DC-II

Debris conveyor



Advantages

energy self-powered • convenient installation • maintenance-free • high efficiency • compact design
applicable for extreme conditions

Description

The debris conveyor DC-II is compact and robust machine for picking up and feeding the debris of a main conveyor back into the product flow.

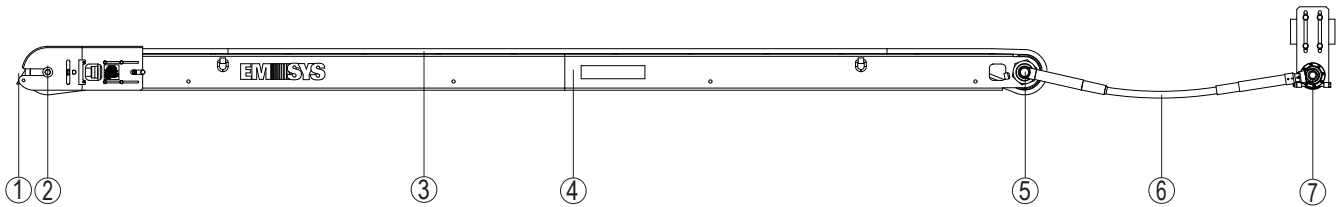
The drive of the DC-II utilizes in an intelligent manner the existing energy of the main conveyor which replaces the conventional electric drive. A driving pulley with integrated angular gear installed into the main conveyor drives the DC-II by a mechanical coupling through a flexible shaft.

The high gear reduction results into a low belt speed which guaranties low wear.

The design of the DC-II manifests itself through easy handling, its compact construction and protection of its moving parts against operational influences.

The experience in operation show a high availability of the DC-II with minimum maintenance effort.

Construction



- ① Head pulley scraper
- ② Discharge pulley with hydraulic belt tensioning unit
- ③ Special belt
- ④ Machine frame
- ⑤ Drive unit existing of the driving pulley with integrated planetary angular gear
- ⑥ Flexible shaft
- ⑦ Driving pulley with angular gear

Function

The DC-II operates in direct dependency on the main conveyor with a fixed gear reduction. The continuous motion of the special belt picks up the main conveyors debris and feeds it back into the material flow.

Technical data

Dimensions

- Width 1240 mm, 1440 mm und 1640 mm
- Total length. 3 m , 6 m und 9 m
- Overall height 250 mm

Systemspecific Data

- Transmission ratio. 1/200

Temperature

- - 20 Grad - + 60 Grad

Design

- Standard und ATEX

Direct drive

Driving pulley with angular gear

- Diameter 159 mm
- Span 1540 mm, 1740 mm und 1940 mm
- Transmission ratio 1 : 0,5
- Max. output torque. 34 Nm
- Overload shear force. 50 Nm

Flexible shaft

- Length. 1500 mm (others on request)
- Bending radius. min. 400 mm
- Rated torque. 24 Nm
- Breaking torque. 170 Nm

Planetary angular gear

Integral part of the driving pulley of the DC-II.

- Transmission ratio. 1 : 239
- Max. output torque. 1200 Nm

Scraper

- Material Polyurethan
- Tension unit. internal part

Special belt

- Belt type. EP630/2;1,5:1,5 mm, self-extinguishing
- Width. 1200 mm, 1400 mm und 1600 mm
- Belt length. 6.710 mm, 12.710 mm und 18.610 mm
- Shape. endless with side and centre profile