

# ALMEX BELTGARD

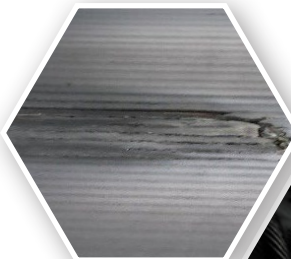
The Almex **BELTGARD 3.0** Systems uses MFL technology to provide advanced non-destructive belt scanning system that can determine cable damage, splice layout, splice deterioration and corrosion in any steel cable belting.

**BELTGARD 3.0** systems uses rare earth magnets that magnetize the steel cables within the conveyor belt and the sensor head and high-speed processor reads the magnetic flux from the damaged/cut/corroded cables.

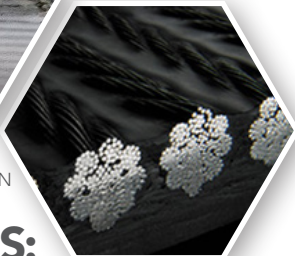
**BELTGARD 3.0** works for any steel cable belt manufacturer and any belt thickness or belt speed. The system provides alerts as various tolerance points set to provide a NDT solution and early warning of any potential belt failures.

**BELTGARD 3.0** is a permanently installed version with high speed on board processor that provides realtime high-speed continuous scanning. The unit is constantly comparing the historical scan to current events to detect events in realtime and prevent catastrophic failures.

For permanent monitoring, Almex Global Services staff can permanently mount the equipment and remotely monitor the conveyor belt anywhere in the world through our Remote Monitoring Centre's.



• BROKEN CABLE DETECTION (SCAN)



• EMBEDDED STEEL CABLE BELT SECTION

## FEATURES:

- Monitoring every revolution compared to baseline
- On demand automated reporting of all events seen within the conveyor system.
- Ability to email specific styles of reports on a weekly/daily/hourly basis
- The system provides several options for integration into the mine PLC through dry contacts, relays, and volt free interface.
- Available signals: Watchdog/health, Alarm & Trip
- Automated belt "parking" to allow specific events to be placed within a maintenance bay for inspection.
- Multilevel password protection and usernames.
- Customizable reports generated upon request.
- Run time reports,
- Damage events within last 24hrs etc.
- Quad core processor with up to 512 gb storage
- Operating temperature -20 to 70 degrees celsius
- Battery backup and orderly shutdown 20 -60 seconds
- Wireless 802.11b/g/n and bluetooth 2.1
- Cellular modem for remote connectivity
- Modbus & ethernet ports & hdmi & usb connections
- Ability to view results safely away from the conveyor via bluetooth and wifi connectivity



Shaw Almex  
Europe B.V.

31 646648648  
Drachten, The Netherlands

Shaw Almex  
Industries

1 905 643 7750  
Stoney Creek, Ontario

Shaw Almex  
Industries

1 705 746 5884  
Parry Sound, Ontario

Shaw Almex  
Fusion, LLC.

1 404 292 8600  
Decatur, Georgia, USA

Shaw Almex  
Africa (Pty) Ltd.

27 11 794 8262  
South Africa

ALMEX  
GROUP

Shaw  
Almex  
Industries Ltd.

1.800.977.5423

www.almex.com sales@almex.com