

# BELTGARD 3.0

## EQUIPMENT INSTALLED, CONTINUOUS SCAN

The **EMSYS BeltGard Systems** uses MFL technology to provide advanced non-destructive belt scanning system that can determine cable damage, splice layout, splice deterioration and corrosion in any steel cable belting. **BeltGard Systems** uses rare earth magnets that magnetize the steel cables within the conveyor belt and the sensor head and high-speed processor reads the magnetic flux from the damaged/cut/corroded cables. **BeltGard** works for any steel cable belt manufacturer and any belt thickness or belt speed. The system provides alerts as various tolerance points set to provide a NDT solution and early warning of any potential belt failures. **BeltGard 3.0** is a permanently installed version with high speed on board processor that provides real-time high-speed continuous scanning. The unit is constantly comparing the historical scan to current events to detect events in real-time and prevent catastrophic failures.

For permanent monitoring, Almex Global Services staff can permanently mount the equipment and remotely monitor the conveyor belt anywhere in the world through our Remote Monitoring Centre's.

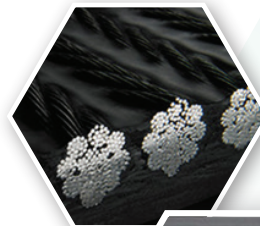
### FEATURES:

- Monitoring every revolution compared to baseline
- On demand automated reporting of all events seen within the conveyor system
- Ability to email specific styles of reports on a weekly/daily/hourly basis
- The system provides several options for integration into the mine PLC through dry contacts, relays, and volt free interface
- Available signals: Watchdog/health, Alarm & Trip
- Automated belt "parking" to allow specific events to be placed within a maintenance bay for inspection
- Multilevel password protection and usernames
- Customizable reports generated upon request
- Run time reports
- Damage events within last 24hrs etc.
- Operating temperature – 40 to 70 degrees celsius
- Cellular modem for remote connectivity

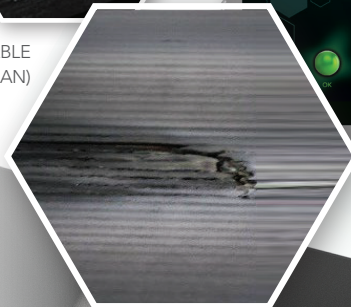
### Additional Benefits:

- BeltGard 3.0 can determine cable damage, splice layout, splice deterioration and corrosion in any steel cable belting
- BeltGard 3.0 Works on any steel cable belt regardless of the manufacturer and any belt thickness or belt speed
- BeltGard 3.0 is permanently installed with high-speed on-board processor that provides real-time continuous scanning. The unit is constantly comparing the historical scan to current events to detect events in real-time and prevent catastrophic failures

• EMBEDDED STEEL CABLE BELT SECTION



• BROKEN CABLE DETECTION (SCAN)



• CONTROL PANEL



EN

GL

Shaw Almex  
Mining Equip. (Tianjin) Co. Ltd.  
☎ +86 (22) 2388-9075

PT. Shaw Almex  
Indonesia  
☎ +61 488 780243

Shaw Almex  
Pacific Pty Ltd. Qld  
☎ 61 7 4774 2011

Shaw Almex  
Pacific Pty Ltd. WA  
☎ 61 8 9358 5860

Shaw Almex  
India PVT. Ltd.  
☎ 91-129-2274624

 **ALMEX**  
GROUP  
www.almex.com 1.800.977.5423