

# AIC<sup>2</sup>

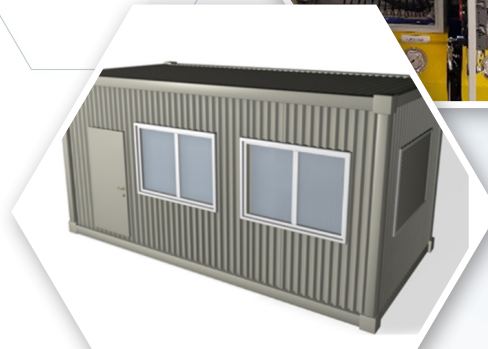
## ALMEX INTEGRATED CONTROLS

During major belt installations there are many forces at work and numerous pieces of equipment that must operate with synchronized precision to ensure that installation is both safe and successful.

The Almex AIC<sup>2</sup> system not only provides that integrated solution but also individually monitors and controls the hydraulic and air systems to ensure control during the entire installation. This advanced networking is the core to the AIC<sup>2</sup> solution and what ensures the pressures are maintained and the correct level and provides the team leader with the information about the progress of the installation.

The solution is the most advanced and sophisticated in the world with the level of redundant systems and monitoring and control. The entry level system is a standalone console to a complete environmentally controlled command center that provides all the data in real time with the installation and provides the highest level of protection and data recording and system control.

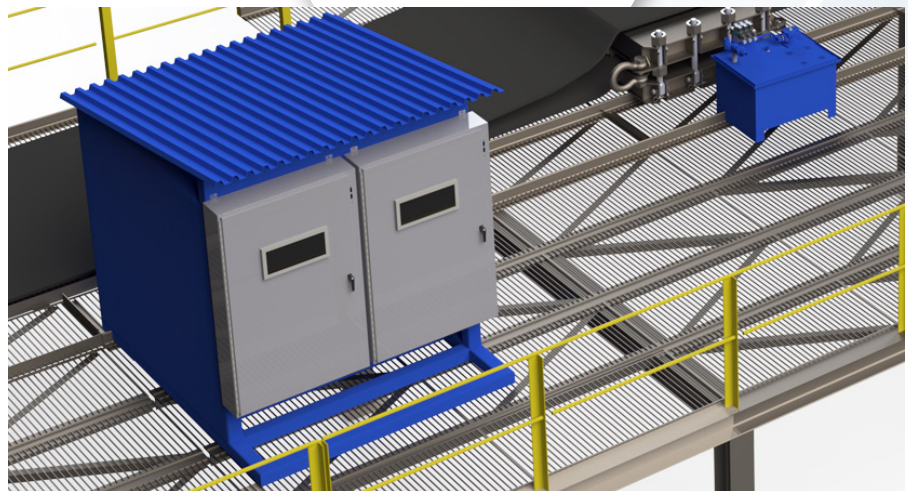
The system allows input for parameters such as maximum belt speed and monitors in real time the amount of belt being advanced and other critical items.



### FEATURES:

- Detailed Operational and Maintenance documentation for the unit
- Commissioning and start-up services are available on request

AIC<sup>2</sup> - Almex Integrated Controls are designed and manufactured according to the specifications required. Please contact your Sales Representative or local Almex office to discuss.



GL

Shaw Almex  
Mining Equip. (Tianjin) Co. Ltd.  
☎ +86 (22) 2388-9075

PT. Shaw Almex  
Indonesia  
☎ +61 488 780243

Shaw Almex  
Pacific Pty Ltd. Qld  
☎ 61 7 4774 2011

Shaw Almex  
Pacific Pty Ltd. WA  
☎ 61 8 9358 5860

Shaw Almex  
India PVT. Ltd.  
☎ 91-129-2274624


**ALMEX**  
GROUP  
www.almex.com 1.800.977.5423